

LAMPATA NEWS

2022 LIVESTOCK NEWS

A dry start again in 2022 meant considerable hand feeding both in the paddock and containment pens. The ewes were scanned with a conception rate of 140%. The top stud flock scanned 147% and the remainder of the stud at 136%. The commercial flocks were 142% and 159%. The overall splits were 52% twin bearing, 40% single bearing.

On the back of dry conditions we decreased our flock numbers to 1820 ewes, both stud and commercial. We have continued to run all our old ewes separate (6 1/2yo) to let us push our genetic turnover rate in both our stud & commercial flocks.

This season we decided to invest in a Jaylor Mixer for feeding our sheep in the paddock and in confinement. This has given us great flexibility with our ration. With the added ability to weigh the mix, we have been able to focus on our feed budgets and ration design, despite being a tough lambing season, our ease of lambing and ewe losses were at an all-time low percentage of mated ewes. We are looking forward to seeing some great results from this in an average season in the future.

WHAT'S IN THIS ISSUE:

- 2022 Livestock
- Farm News
- The Pocock's Welcome Number 3
- On the Farm



It was an honor to be presented with the blue ribbon by Mr. Don Christie, 20yrs since our first blue ribbon

The annual off-shears returned \$385 / head for 385 1½ year old ewes and \$290 / head for 133 respectively. We also won the “Best Presented Pen”. The sale was run in conjunction with Auctions Plus and normal auction in Lameroo due to Covid19. The ewe hoggets were purchased by new and repeat buyers, showing confidence in our selection. We are delighted our clients also had good results in the Lameroo market, in online and on farm sales.



UPCOMING EVENTS



RAM SALE

36TH ANNUAL AUCTION

22.08.2022
LAMEROO S.A.

11AM Inspection 1PM Auction

**Industry proven maternal
genetics, more lambs, more
growth, more PROFIT !**

For more information:

Robert Pocock 0438 824 758

Bruce Pocock 0408 117 366

Stud Classer

Paul Cousins 0427 922 108

Elders Lameroo

Jarryd Finch 0407 722 737

www.lampata.com



ANNUAL AUCTION

Monday 22nd August 2022

Please check your emails for updates

Our eCatalogue will be in your inbox shortly and a hard copy available at the sale.

We have worked hard to get the best data and flock breeding values we can this season for you to back up your purchases.

LAMEROO OFF SHEARS

Friday 14th October 2022

We will be offering
600 1-1/2yo ewes, May 21 drop,
MTS, Eryvac, Gudair, RFID tagged,
scabi-guard. September shorn.



FOR MORE VISIT: www.lampata.com

THE RAMS



THE RAMS

The rams were shorn early this year on March 14th and classed Feb 23rd visually. In May they weighed 81.1kgs and the micron was 18.1, with a 3.1 SD, 16.9 CV, 4.3mm Fat, 33.3 EMD, 148.8 DP, yielding 55% under paddock conditions (entire draft), which varied dramatically up to shearing. The length was 66mm. Full details will be available at the sale. The ewe lambs were shorn at the same time and were OFDA measured, and fleece weighed and then placed into confinement pens after shearing.

FIELD DAYS

This season we have decided to spread our wings and promote our genetics at two field days both the Broken Hill Ag Fair and the Southeast Merino Field Days. This was exciting for us as it has been nearly 30 years since we have shown rams and we were very well received at these events.



FOR MORE VISIT: www.lampata.com

FAMILY AND THE FARM

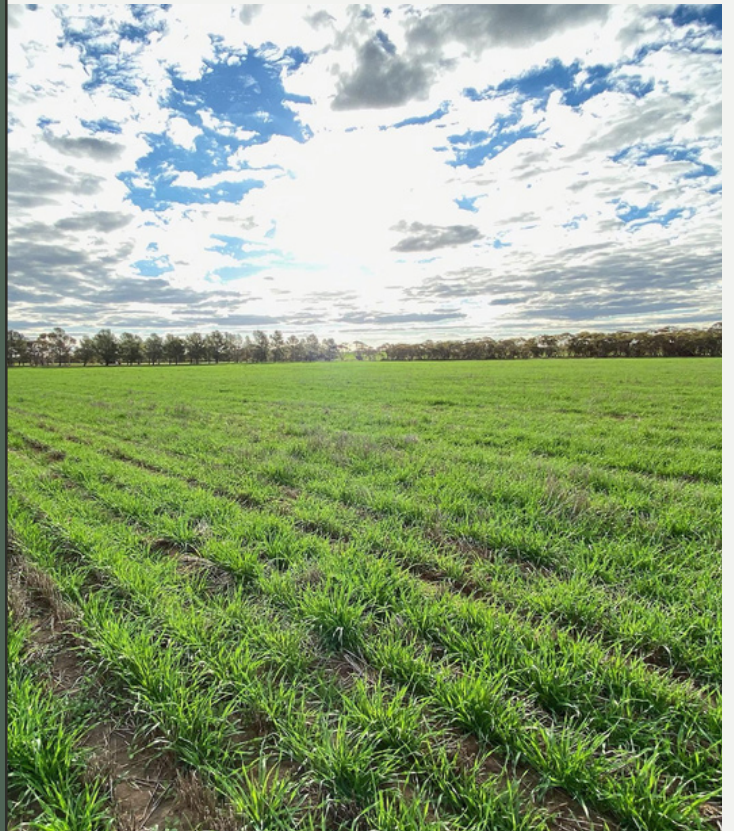


On the family front, Robert, Courtney and the boys welcomed a beautiful daughter and sister, Ruby Elise on March 29th. The next generation has moved forward, and we are delighted to see them thrive and continue to build upon our family's long farming history.

The season has been extremely poor so far, with rainfall only at 135mm to date and 38mm to May 20th. Given the seasonal rainfall instability we experienced we were mindful to stockpile barley from harvest on farm and were fortunate to cut and store some hay in 2021.

This year we have leased another block and it is intended to help with the autumn feed gap. By expanding the ratio of summer stubbles to winter pastures, we are hoping we can leave stock in the paddock for longer than we have been and reduce our feed costs incurred from the containment feeding.

The rotation this season has seen the introduction of beans into the mix to hopefully gain us some great summer stubbles and also a solid feed source for the stock.



FOR MORE VISIT: www.lamapta.com